

NextSWAB™ Sterile Sampling Applicator

mawi

INSTRUCTIONS FOR NASAL USE – English

Caution: Read all steps before collecting samples.

DEVICE NAME

NextSWAB

INDICATION FOR USE

NextSWAB sterile sampling applicator is intended for specimen collection of biological samples. It is a non-invasive swab-based sampling applicator and is intended to be used for nasal mid-turbinate and anterior nares sample collection

DEVICE DESCRIPTION

The NextSWAB is a sterile sampling applicator for biological sample collection. The product is 6 inches in length, with a unique head design positioned at the distal end. The swab head is designed with two channels separated with a septum that can retain the collected nasal material which can then be released into the transport media with a gentle shake. The NextSWAB is ready for use and does not require any preparation for specimen collection.

CONTENTS

NextSWAB*

* Item may not be included in certain countries.

STORAGE AND STABILITY

Stability: Pre-collection: 36 months from date of manufacture between 15-30° C

Storage: 15-30° C

Additional information available at www.mawidna.com

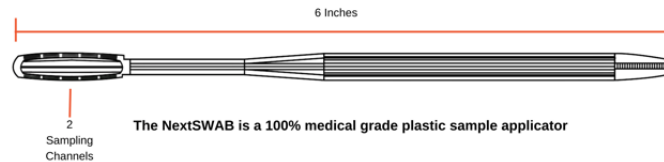
WARNING AND PRECAUTIONS

This product is sterile and for single use only. Do not use if there is evidence of damage to the pouch or it is beyond the expiration date printed on the pouch. Do not ingest.

DEVICES

All NextSWAB family of products consist of a sterile sampling applicator

REF /Catalog Number	Product Family Name	Collection Volume
NextSWAB-1	NextSWAB Sterile Sampling Applicator	1 Swab Pouch
NextSWAB-2	NextSWAB Sterile Sampling Applicator	2 Swab Pouch

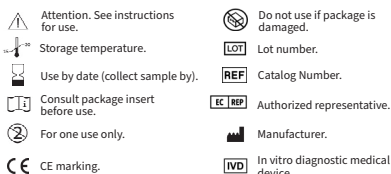
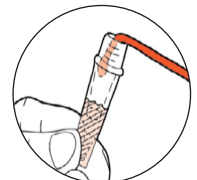
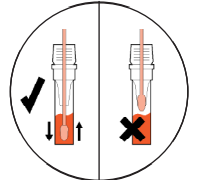
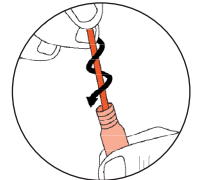
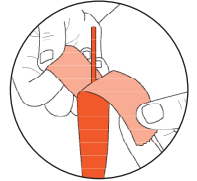


PREPARATION FOR USE

Before sample collection, verify preferred method of collection with your processing lab.

- Note: It is recommended not to eat, drink, or smoke for 30 minutes before collecting your sample.
- Do not touch swab head or allow contact with any other object.

- For nasal collection:** Open the pouch from the side indicated by the arrow and remove the swab, taking care not to touch anything with the NextSWAB tip.
- Unscrew the iSWAB tube cap and set it in flat surface.
- Insert the entire NextSWAB head into your nostril no more than 3/4 inches (1.5cm) into one nostril. Slowly rotate the NextSWAB at least 3 times, gently pressing against the inside of your nostril.
- Gently remove the NextSWAB and repeat step 3 in the other nostril.
- Insert and twist the NextSWAB into the iSWAB tube, so it contacts and scrapes against the plastic insert.
- Agitate the NextSWAB rapidly up and down inside the buffer for several seconds.
- Slowly begin to remove the NextSWAB from the vial, while maintaining contact with the tube and insert.
- Before removing the NextSWAB completely, bend the swab head 90 degrees and scrub against the inside of the tube before gently taking the swab out of the tube.
- Discard the swab according to your local biological hazard waste disposal regulations.
- Proceed with sample processing or storage.

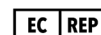


Mawi DNA Technologies LLC

1252 Quarry Lane, Suite A | Pleasanton, CA 94566

Tel: 510-256-5186 Toll Free (US & Canada): 855-DNA-SWAB

www.Mawidna.com



CEpartner4U

Esdornlaan 13 | 3951 DB

Maarn | The Netherlands

www.cepartner4u.com



IFU-0002 (B) NextSWAB Sample Collection | Effective Date: 2023-03-30

NextSWAB™ Sterile Sampling Applicator

mawi

INSTRUCTIONS FOR USE ORAL – English

Caution: Read all steps before collecting samples.

DEVICE NAME

NextSWAB

INDICATION FOR USE

NextSWAB sterile sampling applicator is intended for specimen collection of biological samples. It is a non-invasive swab-based sampling applicator and is intended to be used for oral buccal cell sample collection

DEVICE DESCRIPTION

The NextSWAB is a sterile sampling applicator for biological sample collection. The product is 6 inches in length, with a unique head design positioned at the distal end. The swab head is designed with two channels separated with a septum that can retain the collected nasal material which can then be released into the transport media with a gentle shake.

The NextSWAB is ready for use and does not require any preparation for specimen collection.

CONTENTS

NextSWAB*

* Item may not be included in certain countries.

STORAGE AND STABILITY

Stability: Pre-collection: 36 months from date of manufacture between 15-30° C

Storage: 15-30° C

Additional information available at www.mawidna.com

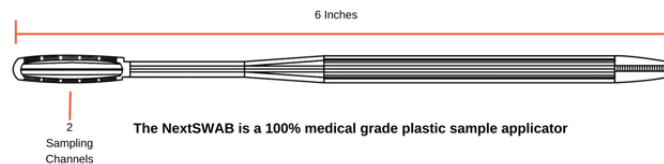
WARNING AND PRECAUTIONS

This product is sterile and for single use only. Do not use if there is evidence of damage to the pouch or it is beyond the expiration date printed on the pouch. Do not ingest

DEVICES

All NextSWAB family of products consist of a sterile sampling applicator

REF /Catalog Number	Product Family Name	Collection Volume
NextSWAB-1	NextSWAB Sterile Sampling Applicator	1 Swab/Pouch
NextSWAB-2	NextSWAB Sterile Sampling Applicator	2 Swab/Pouch

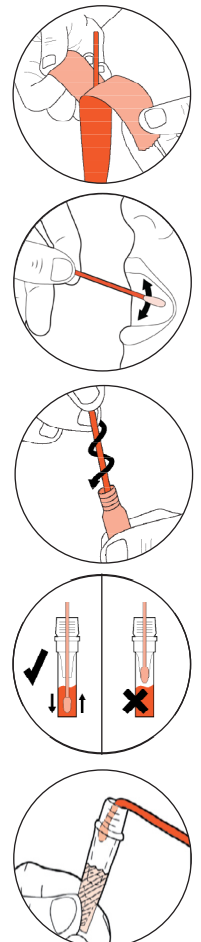


PREPARATION FOR USE

Before sample collection, verify preferred method of collection with your processing lab.

- Note: It is recommended not to eat, drink, or smoke for 30 minutes before collecting your sample.
- Do not touch swab head or allow contact with any other object.

- 1 For oral collection:** Open the pouch from the side indicated by the arrow and remove the swab, taking care not to touch anything with the NextSWAB tip.
- Stimulate saliva production in your mouth by imitating chewing gum movement for at least 5 seconds
- Unscrew the iSWAB tube cap and set it down.
- Insert NextSWAB inside your mouth and dip into the collected saliva, then gently swab the inside of your cheek for 5 seconds.
- Remove NextSWAB out of your mouth and check that you cannot see through the two channels located inside the swab head. If you still can see through the two channels, then repeat steps 2 & 4 until the two channels are fully loaded with saliva.
- Insert and twist the NextSWAB into the iSWAB tube, so it contacts and scrapes against the plastic insert.
- Agitate the NextSWAB rapidly up and down inside the buffer for several seconds.
- Slowly begin to remove the NextSWAB from the vial, maintaining contact with the tube and insert.
- Before removing the NextSWAB completely, bend the swab head 90 degrees and scrub against the inside of the tube before gently taking the swab out of the tube.
- Discard the swab according to your local biological hazard waste disposal regulations. Proceed with sample processing or storage.



Attention. See instructions for use.
 Storage temperature.
 Use by date (collect sample by).
 Consult package insert before use.
 For one use only.
 CE marking.

Do not use if package is damaged.
 Lot number.
 Catalog Number.
 Authorized representative.
 Manufacturer.
 In vitro diagnostic medical device.

Mawi DNA Technologies LLC

1252 Quarry Lane, Suite A | Pleasanton, CA 94566

Tel: 510-256-5186 Toll Free (US & Canada): 855-DNA-SWAB

www.MawiDNA.com



EC REP

CEpartner4U

Esdorlaan 13 | 3951 DB

Maarn | The Netherlands

www.cepartner4u.com

IFU-0002 (B) NextSWAB Sample Collection | Effective Date: 2023-03-30