

INSTRUCTIONS FOR NASAL/ SALIVA USE – English

Caution: Read all steps before collecting samples.

DEVICE NAME

iSWAB™-Respiratory Tract Sample Collection Media-Extraction-Less (iSWAB™-RC-EL)

INDICATION FOR USE

The iSWAB™-Respiratory Tract Sample Collection Media-Extraction-Less collection device is intended for the stabilization and inactivation of upper respiratory and saliva human specimens suspected of containing SARS-CoV-2. This device can be used for the collection, transport, and storage of specimens at ambient temperature. Specimens collected in the iSWAB-Respiratory Tract Sample Collection Media-Extraction-Less-EL collection device are suitable for use with legally marketed molecular diagnostic tests.

CONTENTS

iSWAB™-RC-EL Device

Swabs sold separately*

iSPIT™ funnel sold separately* §

NextSWAB® sold separately* §

*Not included in rack or bag format

§ Item may not be included in certain countries.

STORAGE AND STABILITY

Pre-collection: 15 months from date of manufacture, between 15-30° C. Transport temperature.

Post-collection: Sample stability and storage 15-30° C. 28 days for nasal specimens and 33 days for saliva specimen

Additional information available at

www.mawidna.com.

WARNING AND PRECAUTIONS

For external use and single use only. DO NOT drink, touch, or remove the buffer from the device. Do Not use if device is broken, leaking, or visibly damaged. These products should only be used in accordance with the instructions provided. Avoid skin and eye contact with the liquid in the tube. If Ingested Call a POISON CENTER. Rinse mouth. IF IN EYES: Rinse cautiously with water for several minutes. Not a Hazardous Combustion Product. Device cap can be a choking hazard. Do not ingest.

DEVICES

All the iSWAB™-RC-EL family of products consist of one device pre-filled with 800 µL stabilizing buffer.

| REF /Catalog Number | Product Name | Stabilizing Buffer |
|---------------------|---|--------------------|
| IRC-T-EL | iSWAB™-Respiratory Tract Sample Collection Media-Extraction-Less | 800 µL x 500 units |
| IRC-T-EL-R | iSWAB™-Respiratory Tract Sample Collection Media-Extraction-Less Rack | 800 µL x 50 units |

PREPARATION FOR USE

Before sample collection, verify preferred method of collection with your processing lab.

- Note: It is recommended not to eat, drink, or smoke for 30 minutes before collecting your sample.
- Do not touch swab tips or allow contact with any other object.
- For swab collection, use either 1 or 2 swabs depending on the test protocol.
- Tap the device gently 2-3 times before collection to concentrate all liquid to the bottom.

If using saliva collection skip to step number 8

For saliva self-collection, the iSPIT funnel is purchased separately.

1 Place device standing up on a flat surface. Peel open bags containing swabs and remove a swab. Unscrew device cap before collecting sample.

2 For nasal mid-turbinate collection: Insert the swab head into your nostril no more than 3/4" (1.5cm) in. Slowly rotate at least 3 times, gently pressing against the inside of your nostril. Gently remove the swab and repeat this step in your other nostril.

3 Pick up tube and hold steady in one hand. Slowly twist swab into iSWAB™ tube with a corkscrew motion. There will be resistance, but push swab to the bottom of tube.

4 Hold tube steady and move swab up and down rapidly inside the tube 10-15 times without moving the swab out of the liquid.

5 At this point remove the swab. Hold tube firmly and remove swab by slowly twisting out with a corkscrew motion.

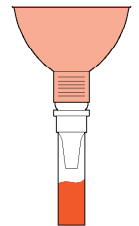
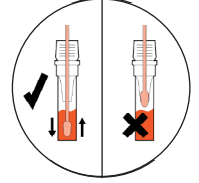
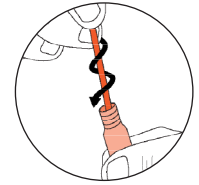
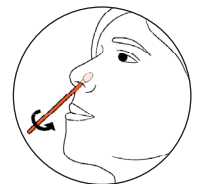
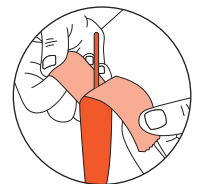
6 For a more concentrated sample, a second sample may be collected by repeating steps 2-5 with another swab. Skip this step if unnecessary.

7 After all samples have been taken, replace cap tightly. Properly dispose used swabs in the appropriate biohazard waste in accordance with federal, state, and local regulations. The sample is now ready for further testing.

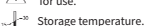
8 Steps For Saliva Collection (Ignore if using swabs for collection):

(1) Remove cap from device and place on a clean surface. (2) Place iSPIT™ funnel onto the tube so that it is resting upright as shown in the picture. (3) Stimulate saliva production in your mouth. (4) Spit 1 or 2 times directly into the funnel. (5) Allow several seconds for all saliva to pass through the iSPIT™ funnel into the tube. (6) Remove funnel and discard in the appropriate biohazard waste in accordance with federal, state, and local regulations. (7) Replace cap securely onto tube. (8) Gently shake the device 5-10x to allow mixing. (9) The sample is now ready for further testing.

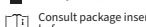
9 For Lab or onsite collection: Proceed with sample processing or storage.



Attention: See instructions for use.



Use by date (collect sample by).



For one use only.



Do not use if package is damaged.



Lot number.



Catalog Number.



Authorized representative.



Manufacturer.



In vitro diagnostic medical device.



Mawi DNA Technologies LLC

26203 Production Ave, Suite No.3 | Hayward, CA 94545

Tel: 510-256-5186 Toll Free (US & Canada): 855-DNA-SWAB

www.MawiDNA.com



CEpartner4U

Esdoornlaan 13 | 3951 DB

Maarn | The Netherlands

www.cepartner4u.com

IFU-0123 (A) iSWAB-RC-EL | Effective Date: 2023-02-09